

# RESPIRATORY THERAPISTS FIGHT CLIMATE CHANGE



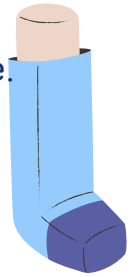
Each metered-dose inhaler (MDI) = carbon footprint equivalent to driving up to **139km** by car (1)

Island Health uses 2,930 inhalers monthly = carbon footprint of driving around the circumference of the earth **4.5 times** (2)

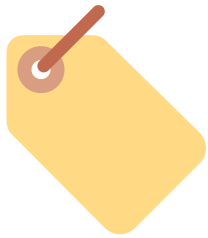
Inhaler loss/waste **↑↑** carbon footprint without contributing to patient care.

Up to **80%** of patients have 1+ identical inhalers dispensed per admission (3)

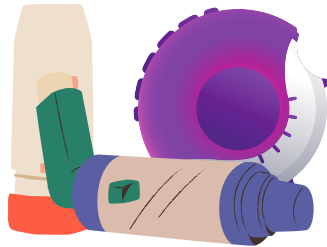
Up to **98%** of doses per inhaler are wasted (4)



## WHAT I CAN DO TODAY



Check if the inhaler you're using is labelled - this will make it easier to reunite with the patient if lost



Don't leave inhaler behind during patient transfers (yes! even the ones sitting on top of the vent!)



Return unused inhaler to pharmacy for repurposing

Return used inhaler to pharmacy for safe disposal

### The Critical Air Project

1. Stoyanova V, Culley C. 2022. Detailed Inhaler Carbon Footprint Chart. Retrieved from <https://cascadescanada.ca/resources/tools-templates/#inhalers>

2. Deng M, Culley CL, Stoyanova V. An Assessment of Inhaler Workflow and Disposal Practices Among Nursing Staff. 2022. Unpublished.

3. Sakaan S, Ulrich D, Luo J, Funch CK, Self TH. Inhaler Use in Hospitalised Patients with Chronic Obstructive Pulmonary Disease or Asthma: Assessment of Waste Doses. *Hosp Pharm.* 2015;50(5):386-390.

4. Aeng ESY, McDougal KC, Allegretto-Smith EM, Tejani AM. Hidden Costs of Multiple-Dose Products: Quantifying Ipratropium Inhaler Wastage in the Hospital Setting. *Can J Hosp Pharm.* 2021;74(2):117-121.

**WANT TO LEARN MORE?  
WANT TO GET INVOLVED?**

**VALERIA.STOYNOVA@ISLANDHEALTH.CA  
CELIA.CULLEY@ISLANDHEALTH.CA**