

NURSES FIGHT CLIMATE CHANGE ONE SHIFT AT A TIME



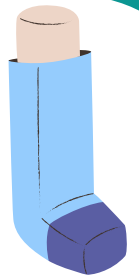
Each metered-dose inhaler (MDI) = carbon footprint equivalent to driving up to **139km** by car (1)

Island Health uses 2,930 inhalers monthly = carbon footprint of driving around the circumference of the earth **4.5 times** (2)

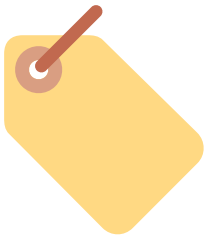
Inhaler loss/waste **↑↑** carbon footprint without contributing to patient care.

Up to **80%** of patients have 1+ identical inhalers dispensed per admission (3)

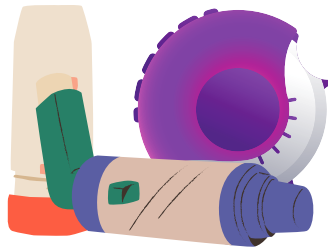
Up to **98%** of doses per inhaler are wasted (4)



WHAT I CAN DO TODAY

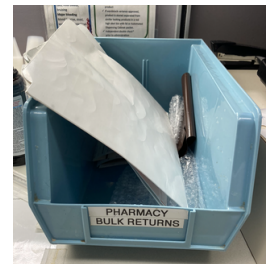


Label each inhaler taken out of wardstock so it can be reunited with the patient if lost



Learn technique for different inhaler types to help your patients get the most out of their medications

www.lung.ca/lung-health/how-use-your-inhaler



Return ALL inhaler to pharmacy for repurposing (if unused) or safe disposal (if used)

The Critical Air Project

1. Stoyanova V, Culley C. 2022. Detailed Inhaler Carbon Footprint Chart. Retrieved from <https://cascadescanada.ca/resources/tools-templates/#inhalers>
2. Deng M, Culley CL, Stoyanova V. An Assessment of Inhaler Workflow and Disposal Practices Among Nursing Staff. 2022. Unpublished.
3. Sakaan S, Ulrich D, Luo J, Funch CK, Self TH. Inhaler Use in Hospitalised Patients with Chronic Obstructive Pulmonary Disease or Asthma: Assessment of Waste Doses. *Hosp Pharm.* 2015;50(5):386-390.
4. Aeng ESY, McDougal KC, Allegretto-Smith EM, Tejani AM. Hidden Costs of Multiple-Dose Products: Quantifying Ipratropium Inhaler Wastage in the Hospital Setting. *Can J Hosp Pharm.* 2021;74(2):117-121.

**WANT TO LEARN MORE?
WANT TO GET INVOLVED?**

VALERIA.STOYNOVA@ISLANDHEALTH.CA
CELIA.CULLEY@ISLANDHEALTH.CA